



BALLINTUBBERT
Gardens & House



Our Vision

Inspiration in Business through Immersion in Nature

We believe that a natural working environment inspires creative thought and a healthy working practice. Relocating your team to an inspirational environment fosters productivity and creativity.

As Ireland's first certified organic formal gardens, nature is at the core of everything we do. This feeds our souls and our inspiration as well as our **Environmental and Sustainable Goals.**

Designed to facilitate corporate retreats, senior management meetings or large company festival gatherings, our highly experienced events and hospitality team are on hand to help you deliver a unique and constructive experience.



A sustainable oasis for exclusive hire





The Ballintubbert Story

Archives reveal that pilgrimages have been made to Ballintubbert for the healing waters since ancient times. Today Ballintubbert (place of the Wells) is blessed to have this delicious, pure and mineral rich, alkaline water run through all of her taps and feeding all of her gardens.

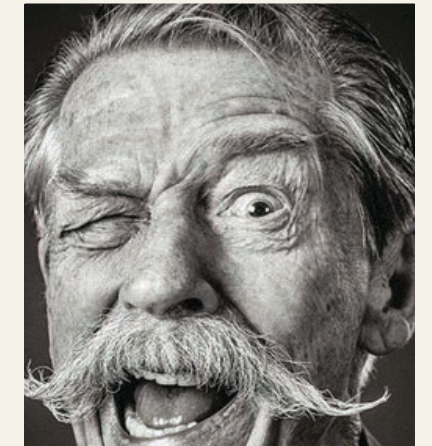
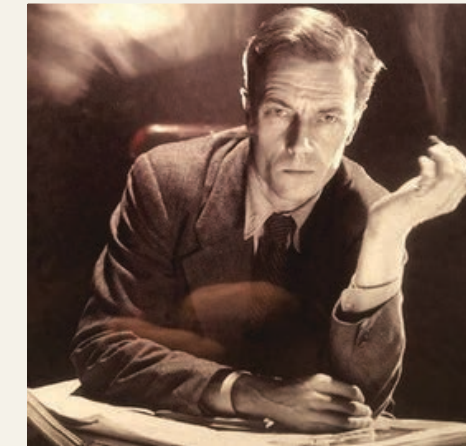
Previous noteworthy custodians of Ballintubbert have been:

C. DAY-LEWIS Famous poet C. Day-Lewis, ultimately **Poet Laureate** and father of actor Daniel Day-Lewis, was born in the house in 1904. Day-Lewis returned to the house in the 60s, resulting in his poem *The House Where I Was Born*.

SEBASTIAN SHAW In the 1940s and 50s, the house was owned by film and stage actor Sebastian Shaw who famously starred as Anakin Skywalker's second-self **Darth Vader** in *Star Wars Return of the Jedi*.

SIR JOHN HURT During the 90s Ballintubbert was owned by highly acclaimed English actor Sir John Hurt CBE whose cinematic career has spanned six decades. Most notable recently was his role in *Harry Potter* as Ollivander the Wand Seller.

CHARLES, JOHN PRESTON & GRAHAM CRESSWELL In 2015, brothers Charles and John Preston with Graham Creswell, tent and event aficionados **BOHEMIA CANVAS** and creators of **THE SALTY DOG** became the present custodians of Ballintubbert and lovingly restored the gardens and house. Their vision was to create an event space like no other and to share the magic of Ballintubbert with all who ventures in.





Meeting Spaces

The Tabernacle Capacity 80 seated or 150 standing. The Tin Tabernacle is a large event room perfect for training days, meetings, or large company get togethers. Accessible toilets and bar/food service facilities. A.V. Facilities Provided.



The Grand Pavilion Capacity 180-250 seated or 300 standing. This Magnificent space with a domed Timber roof is perfect for large gatherings, meetings, concerts or dining. It comes fully furnished with Industrial catering facilities, bar and stage. There is no other space like it.



Breakout Spaces

We have 6 Rooms that can be used for small breakout rooms for a more intimate meeting or a bit of quiet time.

The Office

The office has a large table with space for up to 12 with self contained kitchenette and accessible toilet.

The Dining Room

A beautiful dining room with an extra large dining table that can seat up to 16.

The Map Room and Chinoiserie Room

Both of our reception rooms can be used as breakout meeting rooms or just a peaceful space to relax and take a moment. Large open fires offer a cosy and warm atmosphere to both rooms.

The School House

There are 2 rooms in the adjacent school house than can be used as breakout rooms for meetings or relaxing. The dining table and the large comfortable living room.



The Main House

The Main House at Ballintubbert offers five luxurious double bedrooms

Garden Room Super king bed | en-suite bathroom with bath and separate steam shower, in-room fireplace | view of Lutyens garden, Shaw Herb Garden and Little Orchard.

Shackleton Room Super king bed | en-suite bathroom with bath | in-room fireplace | luxury linens and towels | view of Shackleton Garden.

Shaw Room Super king (can convert to twin bed) | en-suite WC with wash basin | in-room fireplace | luxury linens and towels | view of Mirrored Canal.

Day-Lewis Room Super king bed | en-suite WC with wash basin | in-room fireplace | luxury linens and towels | view of Mirrored Canal.

Jungle Room Emperor sized bed | quiet and private room.



The Garden Wing

Harmoniously restored, the Garden Wing today is a series of four well-appointed rustic chic en-suite double bedrooms, each with an individual aesthetic.

The Tulip Room The Tulip Room is located on the ground floor with its own entrance and consists of a king size bed, en-suite bathroom with shower and toilet.

The Clematis Room The Clematis Room is located on the ground floor with a shared entrance and consists of a super king size bed, en-suite bathroom with shower and toilet

The Sweetpea Room The Sweet Pea Room is located on the 1st floor with a shared entrance and consists of a super king size bed or twin beds, en-suite bathroom with shower and toilet.

The Poppy Room The Poppy Room is located on the 1st floor with a shared entrance and consists of a super king size bed or twin beds, en-suite bathroom with shower and toilet.



The School House

Dating back to 1785, The School House has been brought into the 21st century: 5 bedrooms, spacious, warm and super comfortable.

It's the perfect getaway home from home for friends or families, with a secure large garden and it's own private playground. Centrally located in Ireland, it is in a great position to reach many cities & tourist attractions. A great hidden escape!

A comfortable 5 double bedroom property, with a fully appointed kitchen and a private garden with plenty of outdoor seating, BBQ and playground.

The School House can accommodate up to 10 people. Also, as mentioned, it has a large dining room table, and a spacious sitting-room, excellent as additional breakout spaces and super fast fibre broadband.

Located from the Main House within a short stroll through the Rose Garden, it also has its own entrance and plenty of parking.





The Yurt Village

Nestled in the grounds of Ballintubbert Gardens there are six luxurious yurts located discreetly within a short distance of the house.

Each luxury yurt has a king size bed, electricity, heater and electric blanket. Comfortable toilets and piping hot showers close-by.

Alongside the spacious double bed, the two larger yurts can accommodate up to four people by including two single beds.





The Gardens

Protecting our Biodiversity is so important to us, we never use chemicals in our Gardens. Our sprayers are full of comfrey and nettle tea. Every plant grown in our garden is there for a reason. We have completed a 2 year certification process to be certified Irelands first organic ornamental garden by the Irish Organic Association from 2022.

Sustainability is at the heart of everything we do in Ballintubbert.

We are passionate about the environment and every decision we make in the estate is based on our earth friendly ethos. We are based in 14 acres of organically certified gardens, where all weeds are hand pulled, where blackbirds are our slug control and where bees holiday in our purpose built Beetopia area.

The work of restoring the original gardens was initiated by actor Sir John Hurt who lived here with his young family in the 1990s and then extensively by the Hoban family who added the Water features and the "Garden Rooms". During John Hurts residency, notable Irish garden designer Arthur Shackleton contributed significantly to the horticultural complexity.

Today with the team of horticultural enthusiasts, headed by Jenifer Taggart, they continue to celebrate this magnificent horticultural feat & to explore & share its abundant medicinal & culinary resource.





Catering

Whether you're looking for a lavish 5-course banquet, a casual BBQ, or the fun convenience of mobile food trucks, we have a variety of catering options to suit every occasion.

With both indoor and outdoor seating options available, you can be assured your event will be perfectly matched to its setting.

Our dedicated event planner will work closely with you to select the ideal option and arrangement for your company, ensuring every detail is just right.

We pride ourselves on using locally sourced, seasonal ingredients to craft an exceptional culinary experience your guests will love.





Packages Tailored to Your Needs

We offer flexible packages to suit your team's specific goals.

Executive Retreats: Quiet spaces for strategic planning, complete with luxurious accommodations and catering.

Team-Building Experiences: Choose from guided garden tours, mindfulness workshops, or team-cooking challenges. I am not sure which you do- please edit

Corporate Celebrations: Celebrate milestones with custom-designed events, whether casual BBQs or elegant gala dinners.

Custom packages available upon request. Let us create an unforgettable experience for your team.





Get in Touch

Ready to plan your next corporate retreat?

Call: 087 398 1191

Email: events@ballintubbert.com

Conveniently located within driving distance of major cities and airports.

Only 1 hour from Dublin

[Enquire here](#)

[View our Video](#)