

# Our Vision

## Inspiration in Style through Immersion in Nature

We believe that a natural environment inspires creative thought and a beautiful wedding setting.

As Irelands First Certified Organic formal Gardens, nature is at the core of everything we do.

This feeds our souls and our inspiration as well as our Environmental and Sustainable Goals.

Designed to facilitate your wedding, our highly experienced events and wedding team are on hand to help you deliver a unique and unforgettable experience.



**BALLINTUBBERT**  
Gardens & House

**A sustainable oasis for exclusive wedding hire**



**Accommodates 42 guests in 14 acres of Stunning Gardens**



## The Ballintubbert Story

Archives reveal that pilgrimages have been made to Ballintubbert for the healing waters since ancient times. Today Ballintubbert (place of the Wells) is blessed to have this delicious, pure and mineral rich, alkaline water run through all of her taps and feeding all of her gardens. Previous noteworthy custodians of Ballintubbert have been:

### C. DAY-LEWIS

Famous poet C. Day-Lewis, ultimately **Poet Laureate** and father of actor Daniel Day-Lewis, was born in the house in 1904. Day-Lewis returned to the house in the 60s, resulting in his poem *The House Where I Was Born*.

### SEBASTIAN SHAW

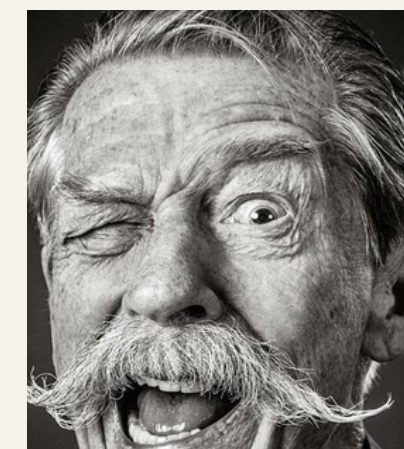
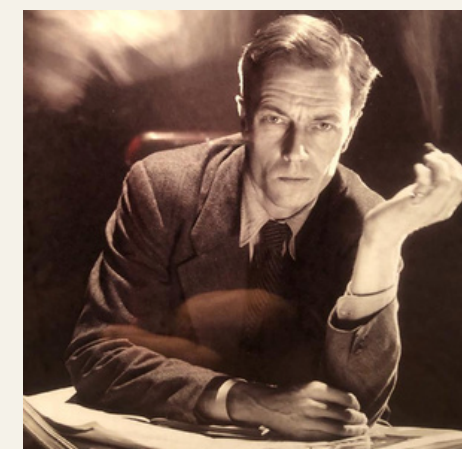
In the 1940s and 50s, the house was owned by film and stage actor Sebastian Shaw who famously starred as Anakin Skywalker's second-self **Darth Vader** in *Star Wars Return of the Jedi*.

### SIR JOHN HURT

During the 90s Ballintubbert was owned by highly acclaimed English actor Sir John Hurt CBE whose cinematic career has spanned six decades. Most notable recently was his role in **Harry Potter** as Ollivander the Wand Seller.

### CHARLES, JOHN PRESTON & GRAHAM CRESSWELL

In 2015, brothers Charles and John Preston with Graham Creswell, tent and event aficionados **BOHEMIA CANVAS** and creators of **THE SALTY DOG** became the present custodians of Ballintubbert and lovingly restored the gardens and house. Their vision was to create an event space like no other and to share the magic of Ballintubbert with all who ventures in.





## Wedding Venues

### The Tabernacle

Capacity 80 seated or 150 standing.

The Tin Tabernacle is a large event room perfect for more intimate weddings and parties. Accessable toilets and bar/food service facilities.

Wifi available.



### The Grand Pavilion

Capacity 180-200 seated or 300 standing.

This magnificent space with a domed timber roof is perfect for large weddings, concerts or dining. It comes fully furnished with rustic tables, bar, stage area and our signature compass dancefloor.

There is no other space like it.





## Ceremony Spaces

Choose from the pure & natural elegance of The Fountain Garden, The Mirrored Canal or overlooking the romantic arboreal aisles of the orchard from the cosy Tabernacle.

### **The Fountain Garden**

The elegance of the Fountain Garden cannot be surpassed for your ceremony. The central steps create a wonderful stage for you and the celebrant.

### **The Mirrored Canal**

Set in front of the Main House, the Mirrored Lake is a beautiful backdrop for your ceremony. This is a perfect space for large weddings.

### **The Tabernacle**

The Tabernacle is a cosy rustic space for your ceremony for indoor ceremonies. A great option for inclement weather.



## The Main House

As part of the magic of Ballintubbert, The Main House boasts 5 double bedrooms.

### Garden Room

Super king bed | ensuite bathroom with bath and separate steam shower, in-room fireplace | view of Lutyens garden, Shaw Herb Garden and Little Orchard.

### Shackleton Room

Super king bed | ensuite bathroom with bath | in-room fireplace | luxury linens and towels | view of Shackleton Garden.

### Shaw Room

Super king (can convert to twin bed) | ensuite WC with wash basin | in-room fireplace | luxury linens and towels | view of Mirrored Canal.

### Day-Lewis Room

Super king bed | ensuite WC with wash basin | in-room fireplace | luxury linens and towels | view of Mirrored Canal.

### Jungle Room

Emperor sized bed | quiet and private room.



## The Garden Wing

Harmoniously restored, the Garden Wing today is a series of four well-appointed rustic chic en-suite double bedrooms, each with an individual aesthetic.

### The Rose Room

The Rose Room is located on the ground floor with its own entrance and consists of a king size bed, en-suite bathroom with shower and toilet.

### The Clematis Room

The Clematis Room is located on the ground floor with a shared entrance and consists of a super king size bed, en-suite bathroom with shower and toilet.

### The Sweetpea Room

The Sweet Pea Room is located on the 1st floor with a shared entrance and consists of a super king size bed or twin beds, en-suite bathroom with shower and toilet.

### The Poppy Room

The Poppy Room is located on the 1st floor with a shared entrance and consists of a super king size bed or twin beds, en-suite bathroom with shower and toilet.



## The School House

Dating back to 1785, The School House has been brought into the 21st century: 5 bedrooms, spacious, warm and super comfortable.

It's the perfect getaway home from home for friends or families, with a secure large garden and it's own private playground.

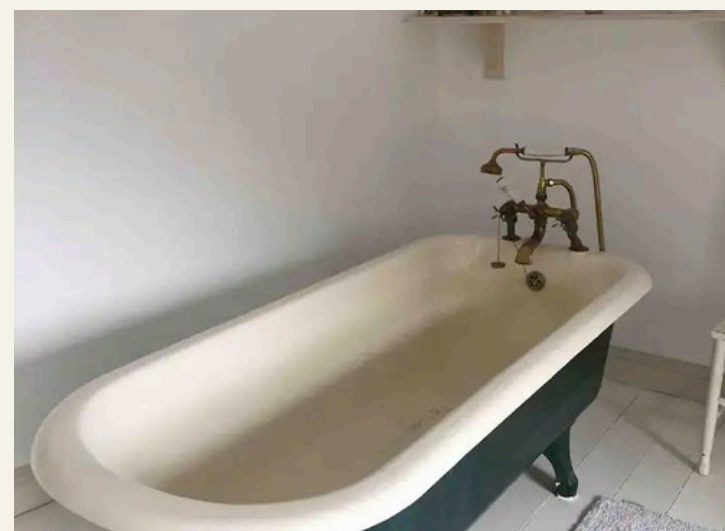
Centrally located in Ireland, it is in a great position to reach many cities & tourist attractions. A great hidden escape!

A comfortable 5 double bedroom property, with a fully appointed kitchen and a private garden with plenty of outdoor seating, BBQ and playground.

The School House can accommodate up to 10 people.

Also, as mentioned, it has a large dining room table, and a spacious sitting-room, with super fast fibre broadband.

Located from the Main House within a short stroll through the Rose Garden, it also has its own entrance and plenty of parking.





## The Yurt Village

Nestled in the grounds of Ballintubbert Gardens there are six luxurious yurts located discreetly within a short distance of the house.

Each luxury yurt has a king size bed, electricity, heater and electric blanket.

Comfortable toilets and piping hot showers close-by.

Each yurt comes with a large double bed and two larger yurts can sleep up to four with the addition of two single beds.







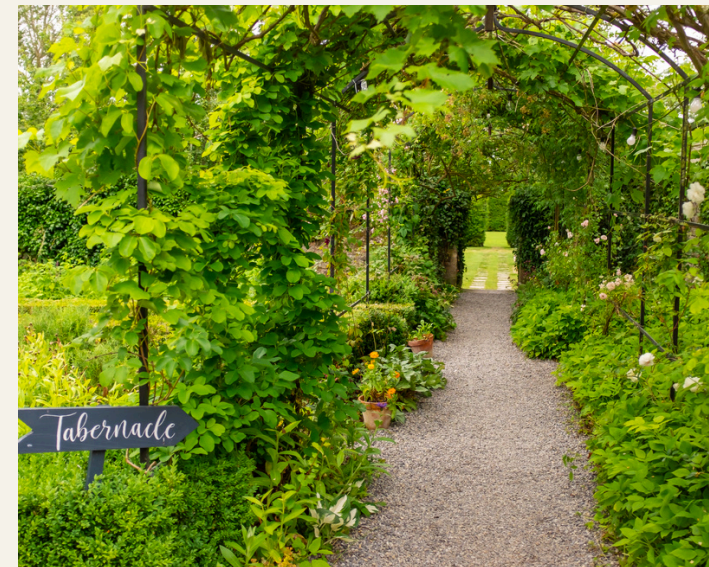
## The Gardens

**Protecting our Biodiversity is so important to us,** we never use chemicals in our Gardens. Our sprayers are full of comfrey and nettle tea. Every plant grown in our garden is there for a reason. We have completed a 2 year certification process to be certified Irelands first organic ornamental garden by the Irish Organic Association from 2022.

**Sustainability is at the heart of everything we do in Ballintubbert.** We are passionate about the environment and every decision we make in the estate is based on our earth friendly ethos. We are based in 14 acres of organically certified gardens, where all weeds are hand pulled, where blackbirds are our slug control and where bees holiday in our purpose built beetopia area.

The work of restoring the original gardens was initiated by actor Sir John Hurt who lived here with his young family in the 1990s and then extensively by the Hoban family who added the Water features and the "Garden Rooms". During John Hurts residency notable Irish garden designer Arthur Shackleton contributed significantly to the horticultural complexity.

Today with the team of horticultural enthusiasts, headed by Jenifer Taggart, they continue to celebrate this magnificent horticultural feat & to explore & share it's abundant medicinal & culinary resource.





## Catering

Whether you're looking for a lavish 5-course banquet, a casual BBQ, or the fun convenience of mobile food trucks, we have a variety of catering options to suit every occasion.

With both indoor and outdoor seating options available, you can be assured your wedding will be perfectly matched to its setting.

Our dedicated caterer will work closely with you to select the ideal option and arrangement for your special day, ensuring every detail is just right.

We pride ourselves on using locally sourced, seasonal ingredients to craft an exceptional culinary experience your guests will love.



# **Weekend Venue Hire**

## **2 Day**

### **Month**

### **Cost**

Jan - March

€4350

April

€6950

May - Sept

€8950

October-December

€6950

Tabernacle only

€2850

Midweek Winter November to March €3950

Midweek Summer April to October €4950

Excludes Accommodation, Catering and Entertainment costs



BALLINTUBBERT  
Gardens & House  
IRELAND



Weddings@ballintubbert.com  
087 9277197

Enquire Here